

2016

Getting More From LibQual+ Data: Using Open Source Tools for Data Analysis and Visualization

Julie Miller

Butler University

Franny Gaede

Butler University, fgaede@butler.edu

Andrew Welp

Butler University, anwelp1@butler.edu

Laura Menard

Butler University, lmenard@butler.edu

Follow this and additional works at: http://digitalcommons.butler.edu/librarian_papers



Part of the [Library and Information Science Commons](#)

Recommended Citation

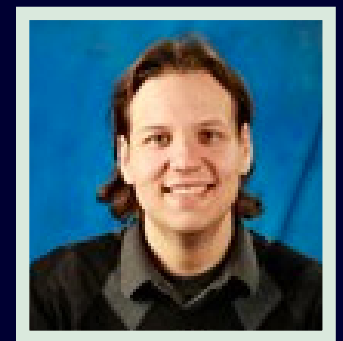
Miller, Julie; Gaede, Franny; Welp, Andrew; and Menard, Laura, "Getting More From LibQual+ Data: Using Open Source Tools for Data Analysis and Visualization" (2016). *Scholarship and Professional Work*. 66.

http://digitalcommons.butler.edu/librarian_papers/66

This Presentation is brought to you for free and open access by the University Libraries at Digital Commons @ Butler University. It has been accepted for inclusion in Scholarship and Professional Work by an authorized administrator of Digital Commons @ Butler University. For more information, please contact fgaede@butler.edu.

GETTING MORE FROM LIBQUAL+ DATA: USING OPEN SOURCE TOOLS FOR DATA ANALYSIS AND VISUALIZATION

1. CLEANING UP THE DATA



team member: **Andrew Welp**
role: Statistical analyst and number cruncher

The first step in this process was cleaning up the raw data provided to us by LibQual+. The raw data were provided to library personnel in .xls format and were manually cleaned up in order to provide clarity for analysis as the raw data were necessarily coded alphanumerically in order for collection of the data. These codes were manually replaced with their actual labels for human analysis.

tools: Excel

2. ASKING RESEARCH QUESTIONS

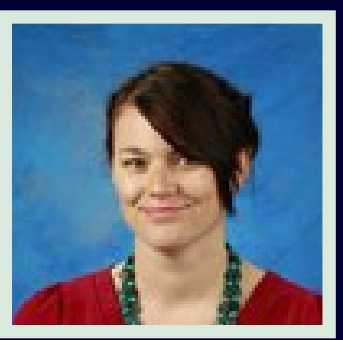


team members: **Julie Miller**, Andrew Welp
role: Dean of Libraries and big picture thinker

1. Are there significant differences in responses based on the preferred library (Irwin Library and the Ruth Lilly Science Library)?
2. Are there significant differences in responses based on demographics? Demographic characteristics included:

- **sex**
- **age**
- **user group** (e.g. undergraduate student, graduate student, faculty)
- **discipline**

3. SELECTING & APPLYING STATISTICAL TOOLS

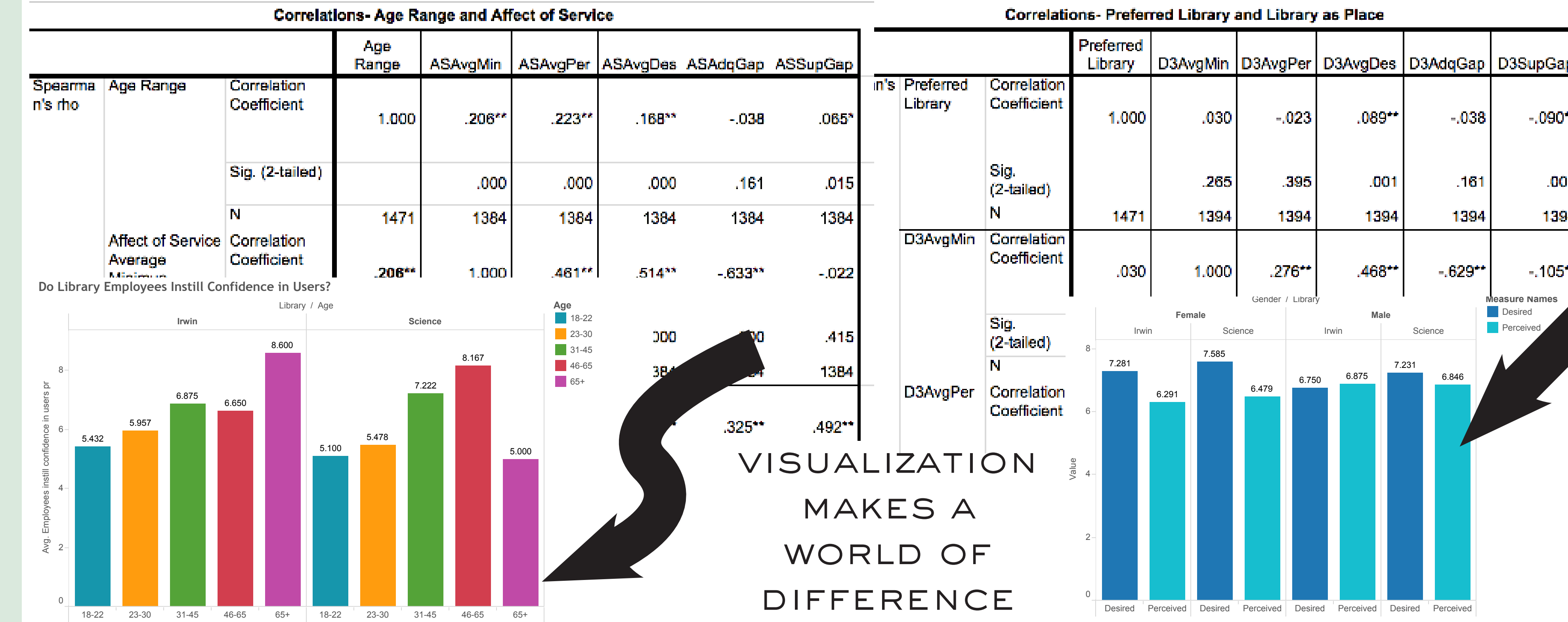


team member: **Laura Menard**, Andrew Welp, Franny Gaede
role: Visualization wrangler and Tableau wizard

A trial of SPSS and the University Edition of SAS were used to conduct inferential analysis of the data for no cost.

As the LibQual+ data were collected to support the library's planning and assessment processes, the results were broad and were more in-line with exploratory methodology. Therefore, hypothesis testing has not been performed as of this time.

tools: Excel, SPSS, SAS



VISUALIZATION
MAKES A
WORLD OF
DIFFERENCE

AFFECT OF SERVICE

confidence

Faculty are confident in library employees, while undergraduates aren't concerned.



knowledge

Undergraduates aren't sure what to make of librarians' knowledge, but faculty and staff perceive employees as knowledgeable.



dependability

The Science Library is perceived as very dependable, particularly by faculty.

LIBRARY AS PLACE

inspiration

Female respondents were more desirous of an inspirational space than their male counterparts.



getaway

Respondents in computer science and engineering were particularly interested in the library-as-getaway.



group vs. individual space

Male respondents are much more interested in individual space than group working space.

INFORMATION CONTROL

print materials

Nearly all respondents were uninterested in expanding print material holdings.



eresources

Younger users are more satisfied with the libraries' electronic holdings.



research tools

Across disciplines and user groups, researchers would like more tools that enable them to work independently.

LIBRARY SERVICES

hours

Unsurprisingly, students would like more hours at both libraries. Faculty are content.



catalog

Humanities respondents see the most room for improvement in the catalog. Communication and journalism folks are pretty happy with it as is.



equipment

Science library users have a higher level of expectation for modern equipment, but are also more satisfied overall.

4. PLAN & IMPLEMENT VISUALIZATION



team members: **Franny Gaede**, Laura Menard
role: Visualization wrangler and designer

We looked at several options, and after weighing some costs and benefits, selected two high-quality and cost-effective visualization applications:

- Tableau
- Keynote

Tableau is free, relatively easy to learn, and allows users to harness the platform for everything from basic to advanced visual analytics. Keynote was then used to turn our Tableau visualizations into an infographic.

tools: Keynote, Tableau



5. INTEGRATION INTO STRATEGIC PLANNING

team members: All

The faculty and staff of Butler University Libraries meet annually to review progress toward goals based on assessment reports and to identify new or continuing initiatives in support of the five strategic priorities and seven goals of the 2013-16 strategic plan.

In our planning retreat in August 2015, we reviewed both quantitative and qualitative LibQual+ results to inform the planning discussion. Five of the resulting 26 initiatives developed for the 2015-16 academic year were based on LibQual+ findings and response themes.

6. CLOSING THE LOOP & NEXT STEPS

team members: All

Here are two strategic initiatives developed using LibQual+ data, the actions taken as of August 2016, and results/next steps

15-16 Initiative	Action(s) Taken	Results/Next Step(s)
Assess user interface and improve usability of electronic resources.	The library web site was migrated from Embraco to Drupal and redesigned based on best practices. Enhancement request for sorting A-Z journal availability placed with OCLC.	Usability testing testing to determine both accuracy and ease of use based on site revision and enhancement.
Communicate findings from the LibQual+ survey to primary constituent groups (e.g., students, faculty, & administrators).	Presented LibQual+ data to Butler Student Government Association representatives, Provost's Advisory Council members, and building design planning group for Science Library renovation.	SGA agreed to fund furniture and other improvements for a new quiet study area in basement of Irwin Library. Decision to emphasize quiet study space in Science Library renovation.